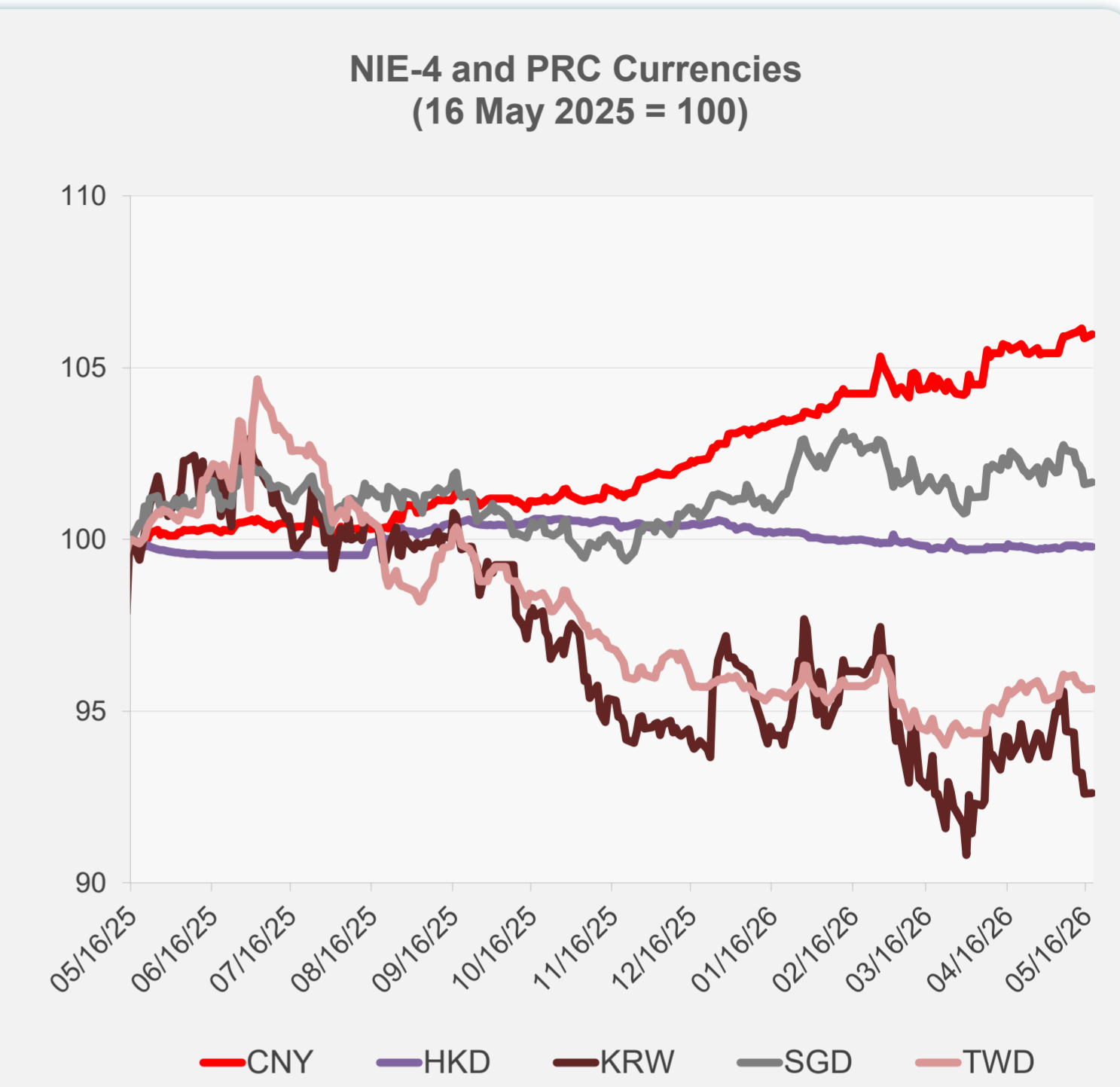
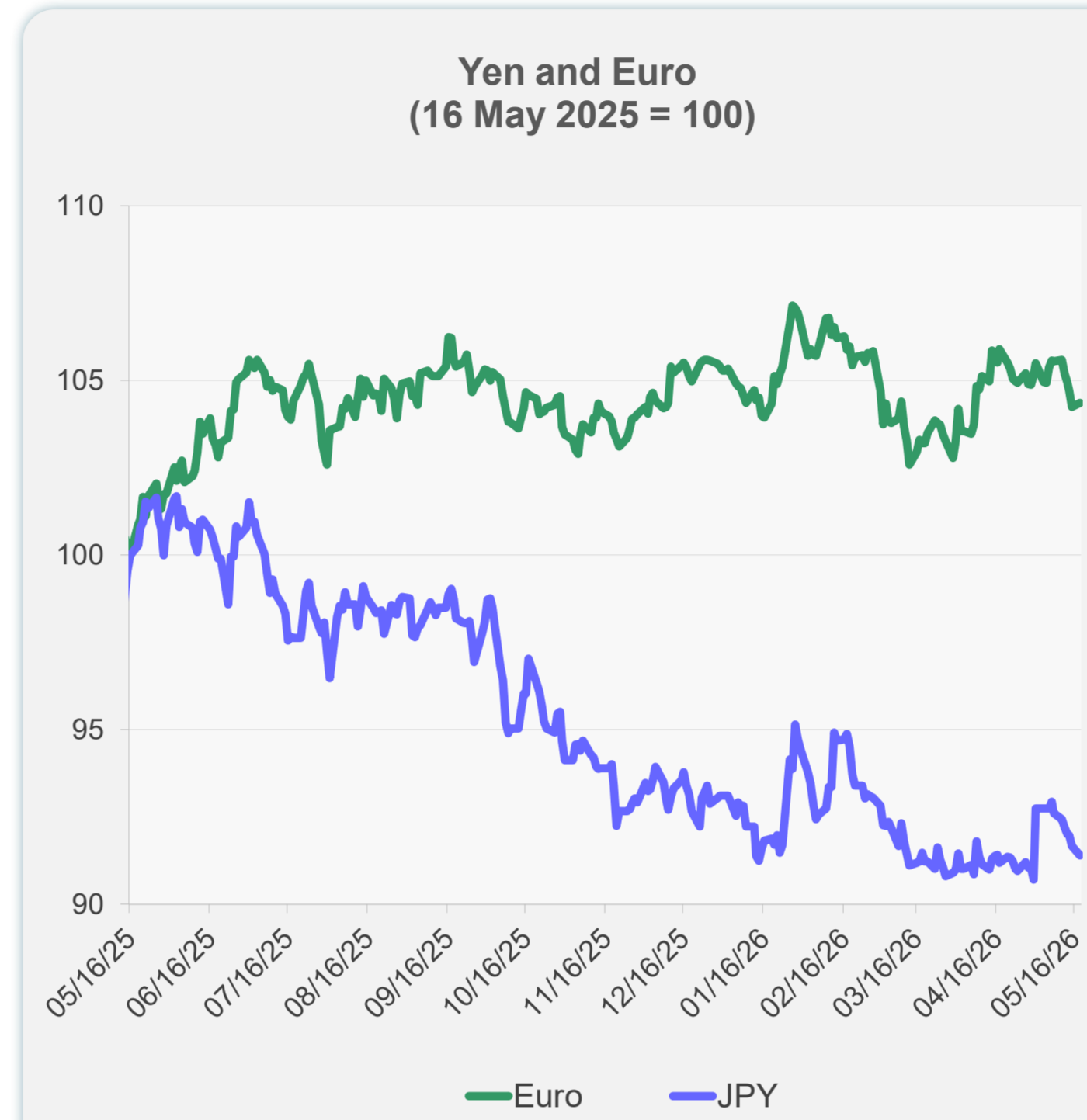
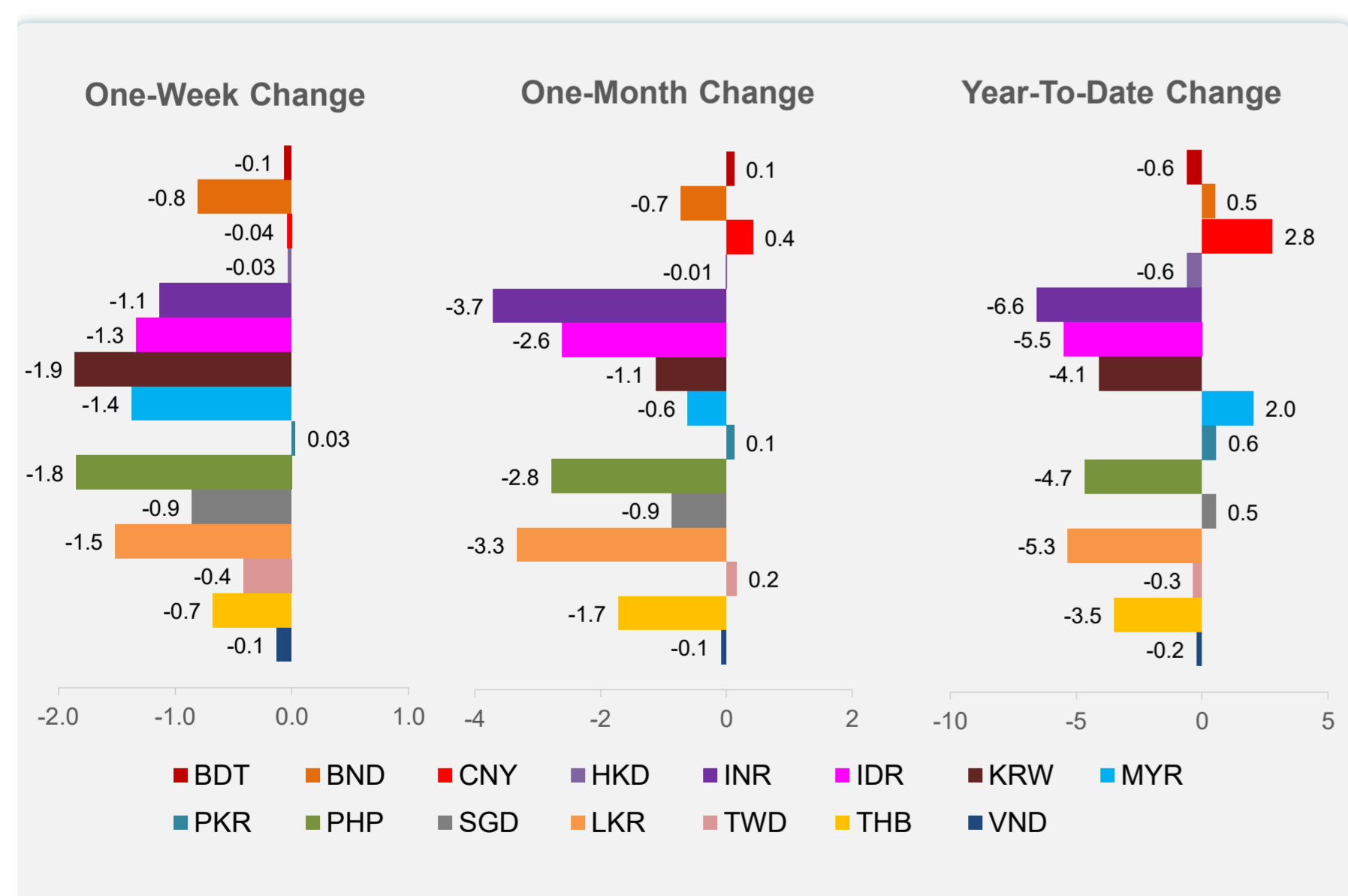
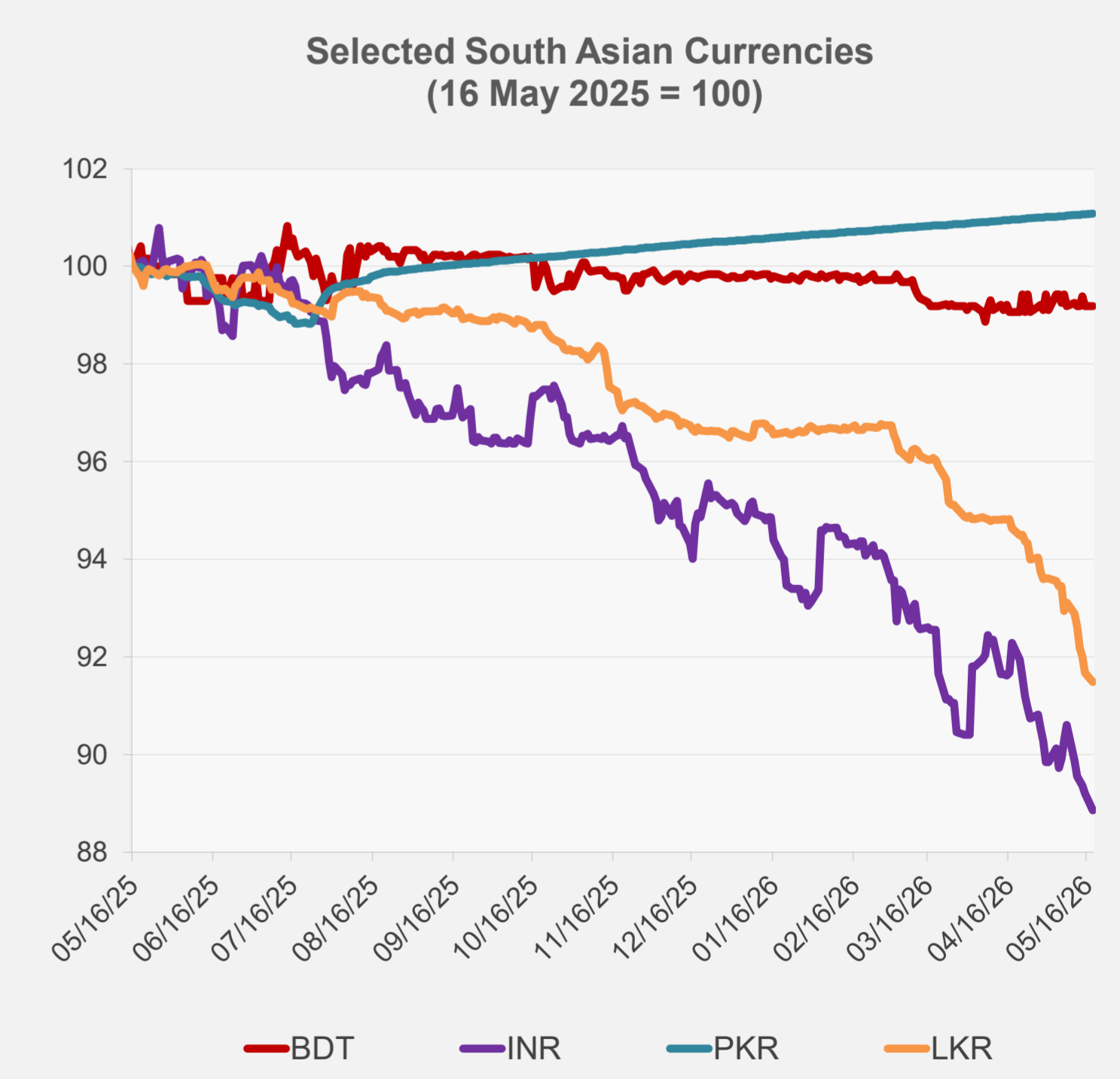
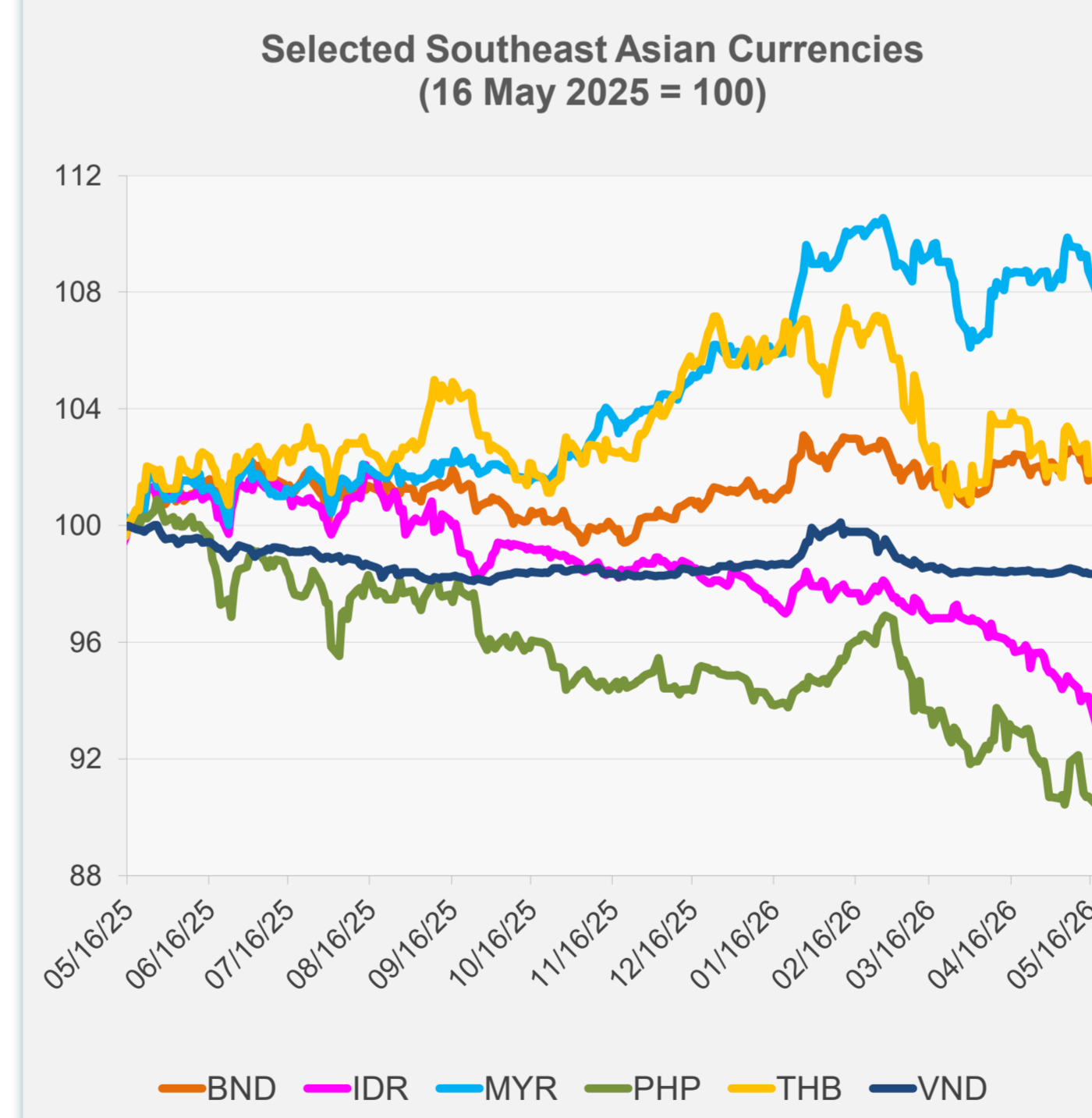


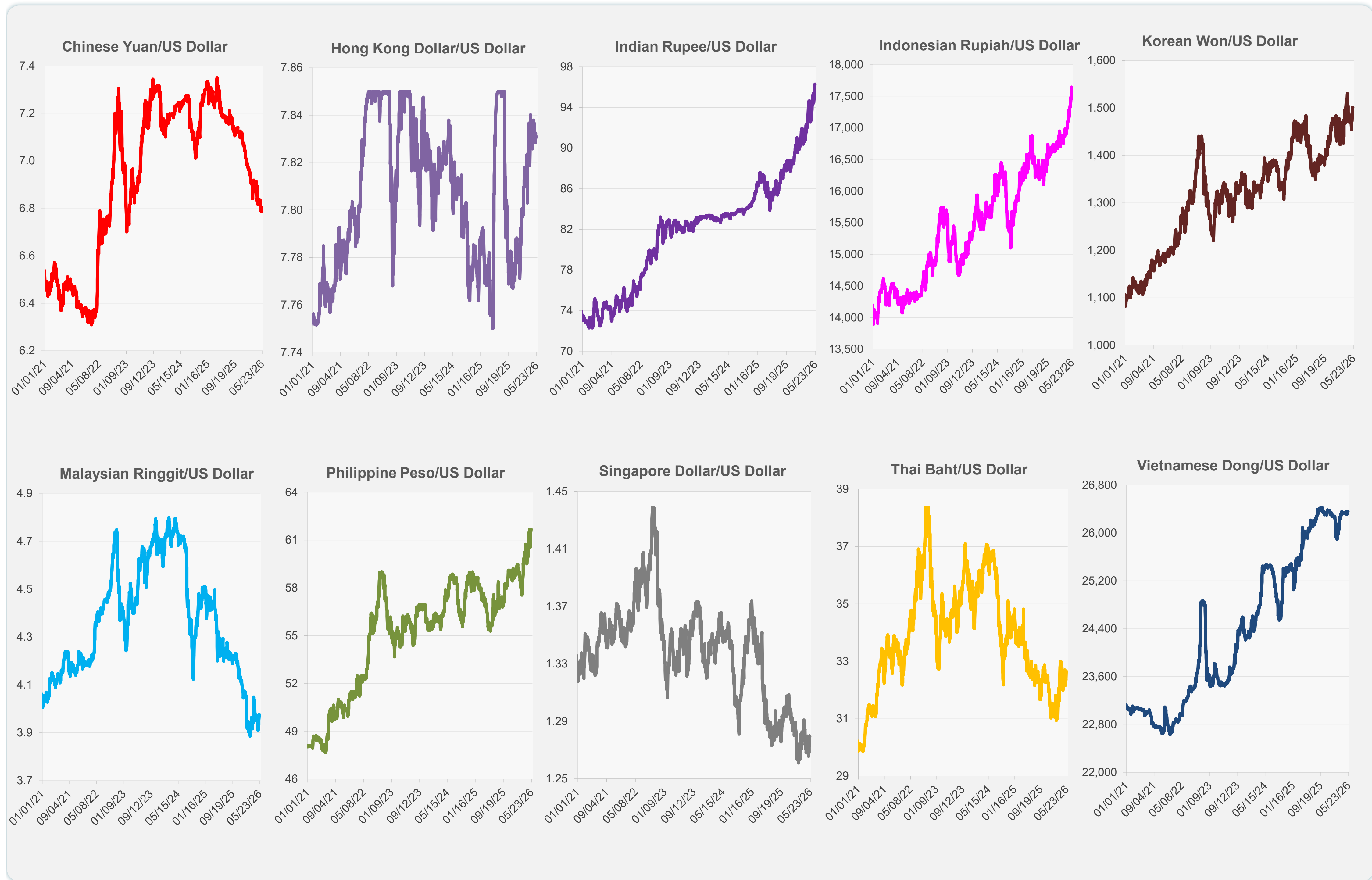
	Latest Closing	% change from Previous Day	% change from 01-Jan-26
Euro	0.86	0.10	-0.87
Japanese yen (JPY)	158.93	-0.30	-1.86
Bangladeshi taka (BDT)	123.00	0.00	-0.61
Brunei dollar (BND)	1.28	0.14	0.49
Chinese yuan (CNY)	6.80	0.10	2.79
Hong Kong dollar (HKD)	7.83	-0.01	-0.61
Indian rupee (INR)	96.29	-0.38	-6.56
Indonesian rupiah (IDR)	17,645.00	-1.02	-5.50
Korean won (KRW)	1,500.30	0.03	-4.09
Malaysian ringgit (MYR)	3.98	-0.65	2.04
Pakistan rupee (PKR)	278.57	0.01	0.55
Philippine peso (PHP)	61.68	-0.31	-4.67
Singapore dollar (SGD)	1.28	0.05	0.54
Sri Lanka rupee (LKR)	327.00	-0.21	-5.32
Taipei,China NT dollar (TWD)	31.55	0.02	-0.34
Thai baht (THB)	32.65	0.03	-3.49
Vietnamese dong (VND)	26,359.00	-0.02	-0.22



NIE = Newly Industrialized Economies



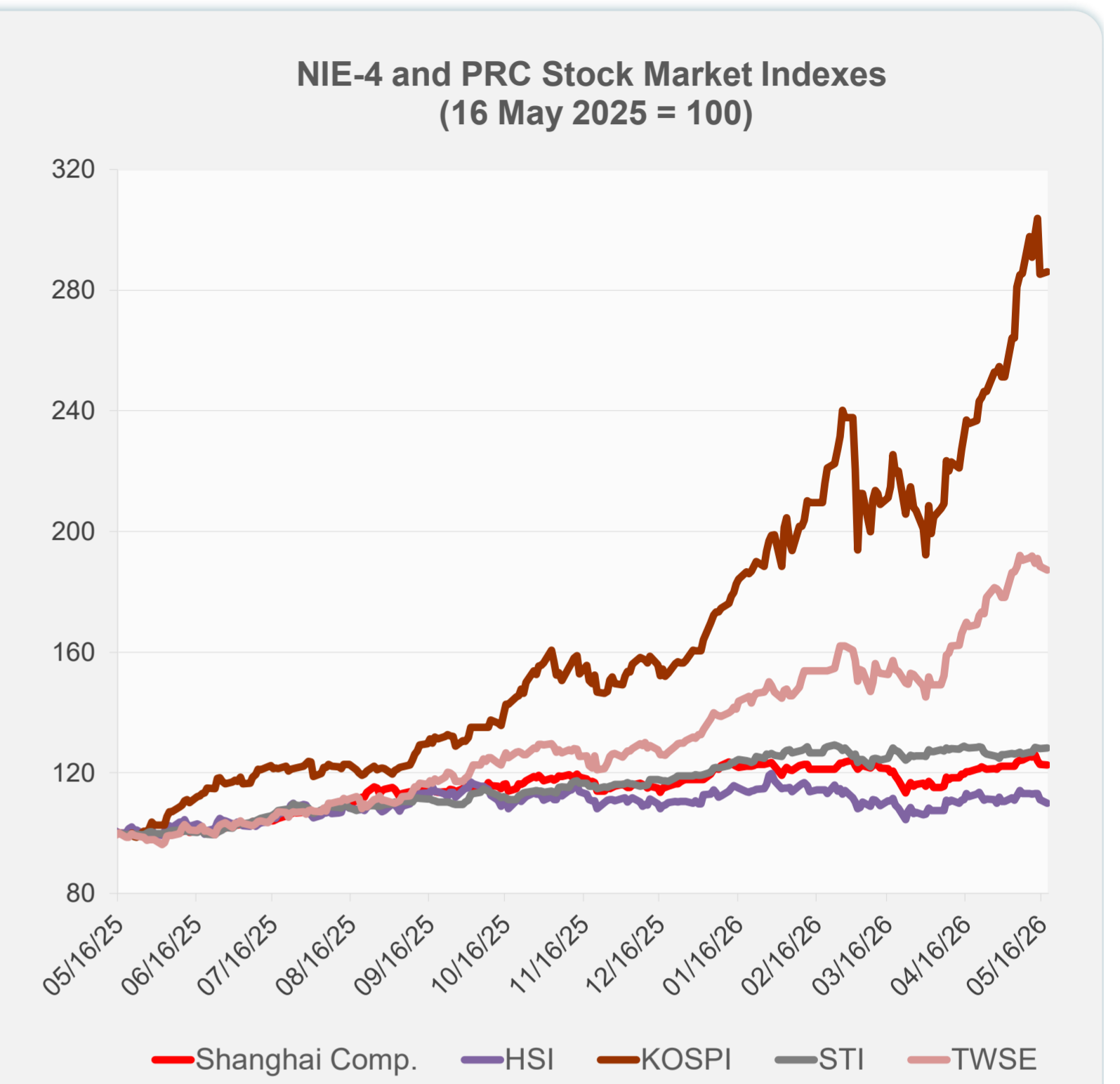
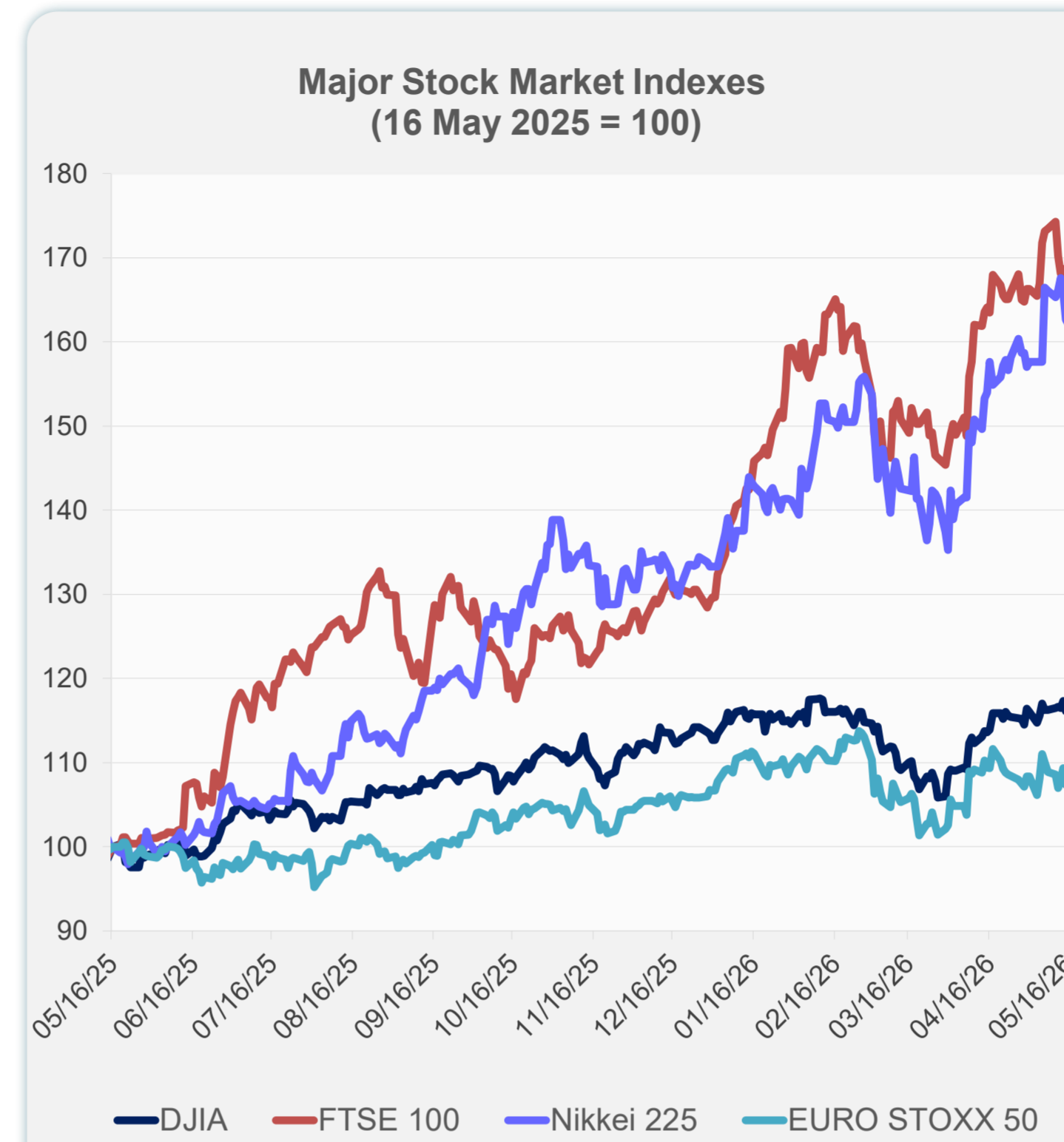
Note: Negative/Decreasing values indicate depreciation of local currency, and positive/increasing values indicate appreciation.
Source: ADB calculations using data from Bloomberg and Haver Analytics.



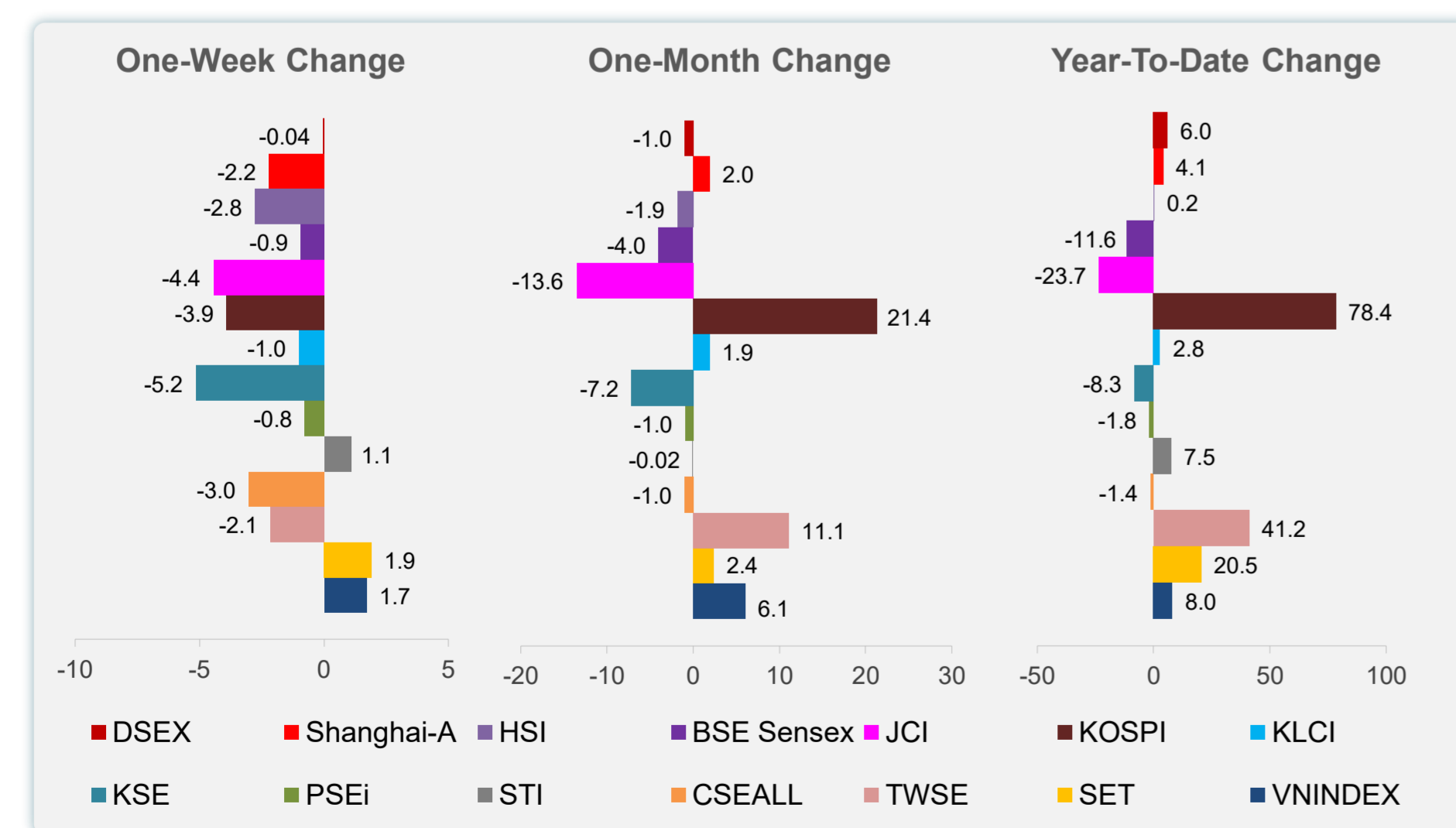
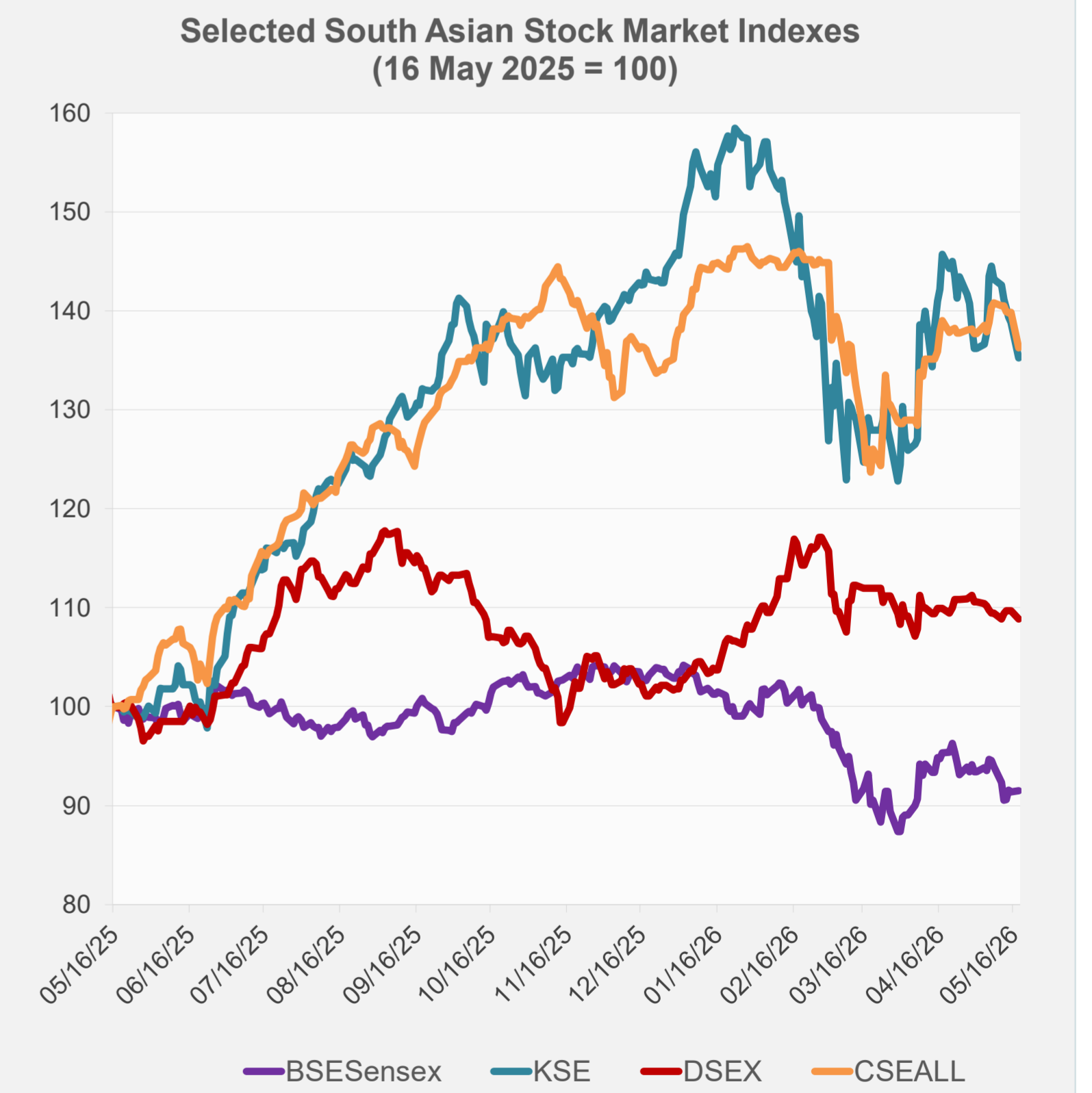
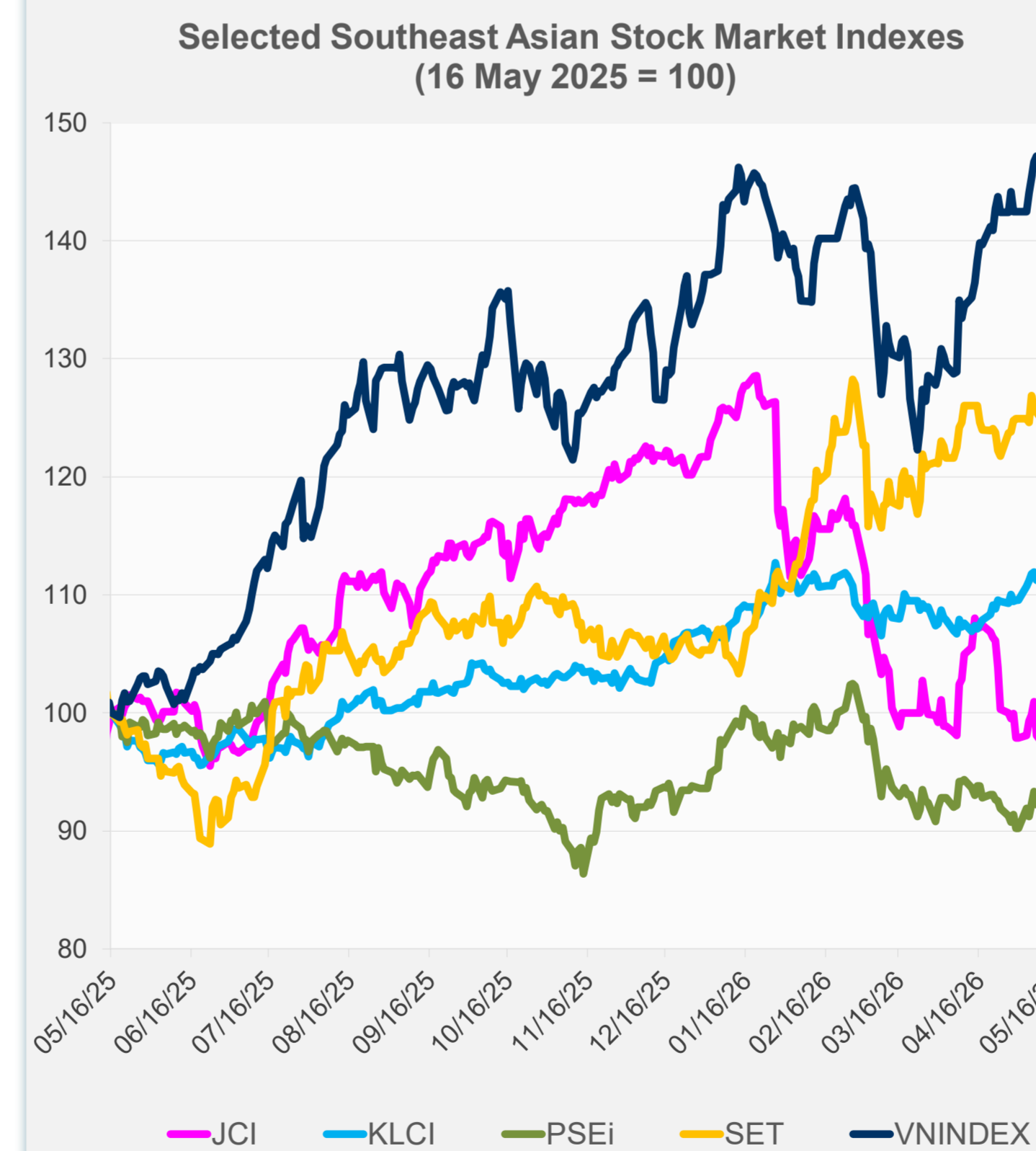
Source: Haver Analytics.

Daily Market Watch
STOCK INDEXES

	Latest Closing	% change from Previous Day	% change from 01-Jan-26
US Dow Jones Ind Avg	49,686.12	0.32	3.38
US NASDAQ	26,090.73	-0.51	12.26
US S&P 500	7,403.05	-0.07	8.14
UK FTSE 100	14,029.54	-2.35	24.58
EURO STOXX 50	5,849.00	0.36	0.99
Japan NIKKEI 225	60,815.95	-0.97	20.81
Bangladesh DSEX	5,203.11	-0.80	5.96
PRC Shanghai Comp.	4,131.53	-0.09	4.10
Hong Kong, China HSI	25,675.18	-1.11	0.17
India BSE Sensex	75,315.04	0.10	-11.59
Indonesia JCI	6,599.24	-1.85	-23.68
Korea, Rep. of KOSPI	7,516.04	0.31	78.35
Malaysia KLCI	1,727.71	-0.72	2.83
Pakistan KSE 100	161,830.30	-2.56	-8.30
Philippines PSEi	5,941.52	-0.59	-1.84
Singapore STI	4,996.75	0.15	7.54
Sri Lanka CSEALL	22,313.47	-2.59	-1.37
Taipei, China TWSE	40,891.82	-0.68	41.18
Thailand SET	1,517.74	-0.01	20.49
Viet Nam VNINDEX	1,927.94	0.33	8.04



NIE = Newly Industrialized Economies



Sources: ADB calculations using data from Bloomberg and CEIC Data Company.



Sources: ADB calculations using data from Bloomberg and CEIC Data Company.

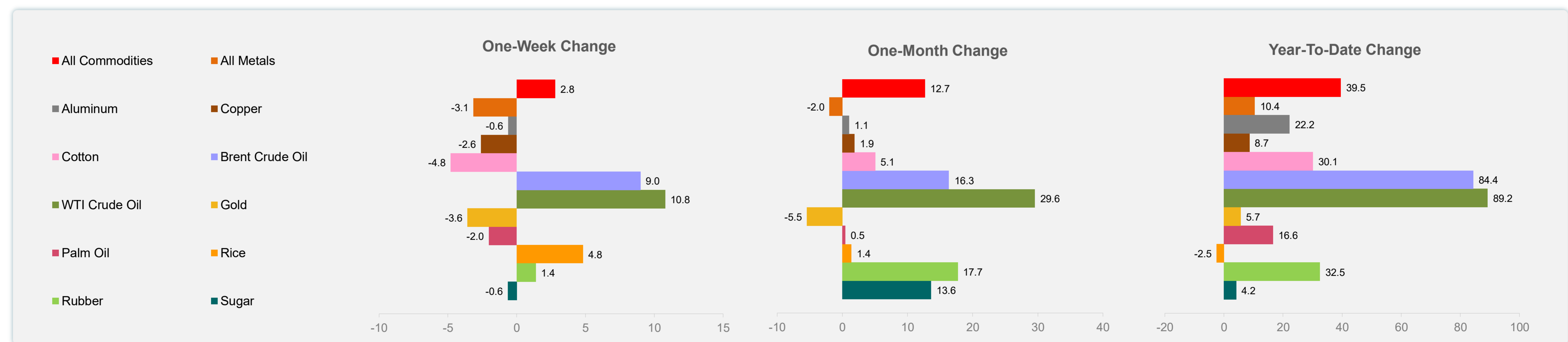
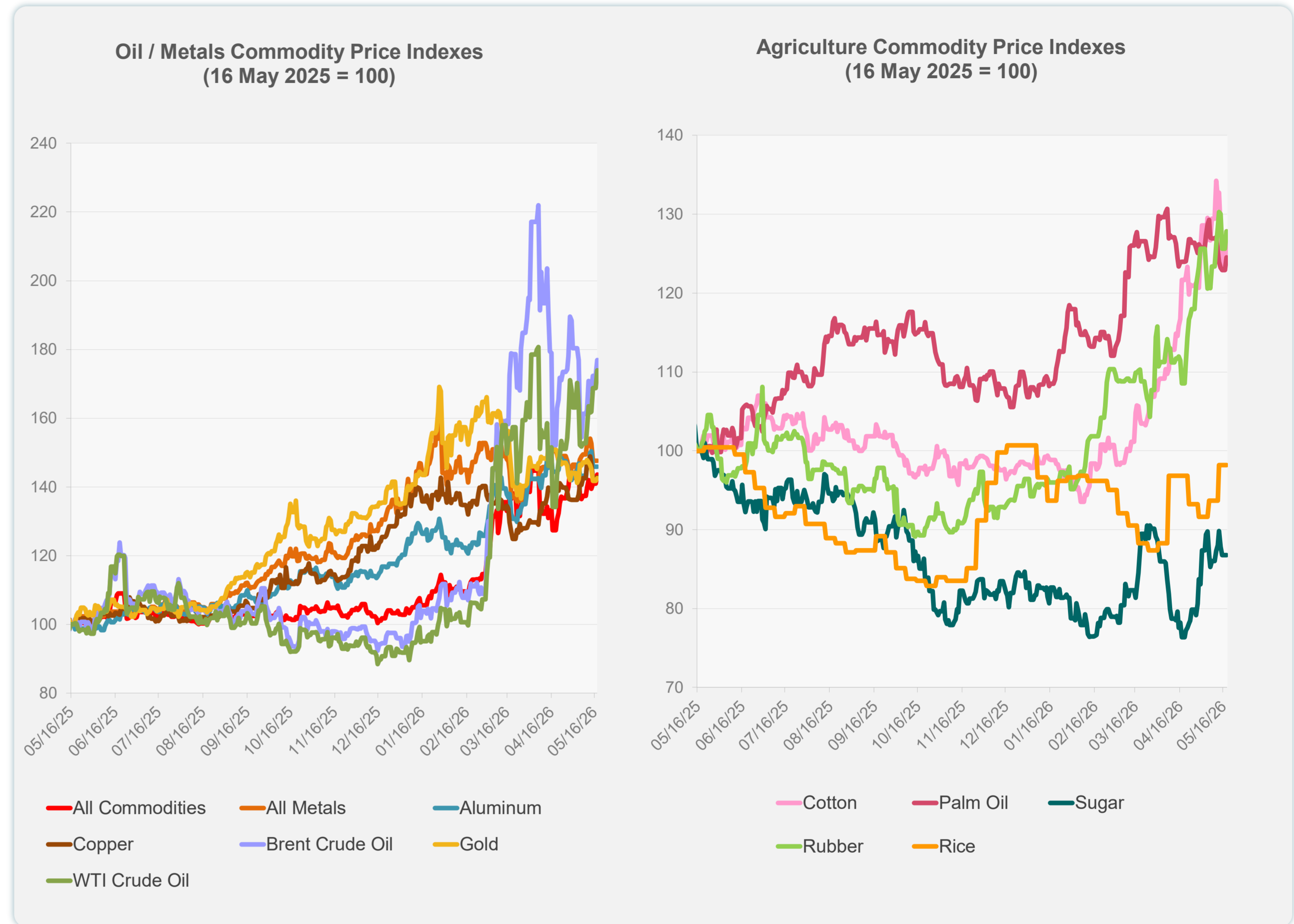
Daily Market Watch
COMMODITY PRICES

19 May 2026, 9:00 AM Manila

	Unit	Latest Closing	% change from Previous Day	% change from 01-Jan-26
S&P All Commodities	US\$	765.35	1.89	39.53
S&P All Metals	US\$	490.12	0.05	10.45
Aluminum	US\$/metric ton	3,627.76	-0.02	22.23
Copper	US\$/metric ton	13,532.18	0.22	8.66
Cotton	US cents/lb	80.70	3.98	30.12
Brent Crude Oil	US\$/barrel	115.12	2.65	84.35
WTI Crude Oil	US\$/barrel	108.66	3.07	89.24
Gold	US\$/troy oz	4,566.67	0.59	5.73
Palm Oil	US\$/metric tonne	1,129.45	1.32	16.60
Rice ¹	US\$/metric ton	435.00	0.00	-2.47
Rubber ²	US\$/kg	284.90	1.75	32.51
Sugar	US cents/lb	15.41	0.00	4.19

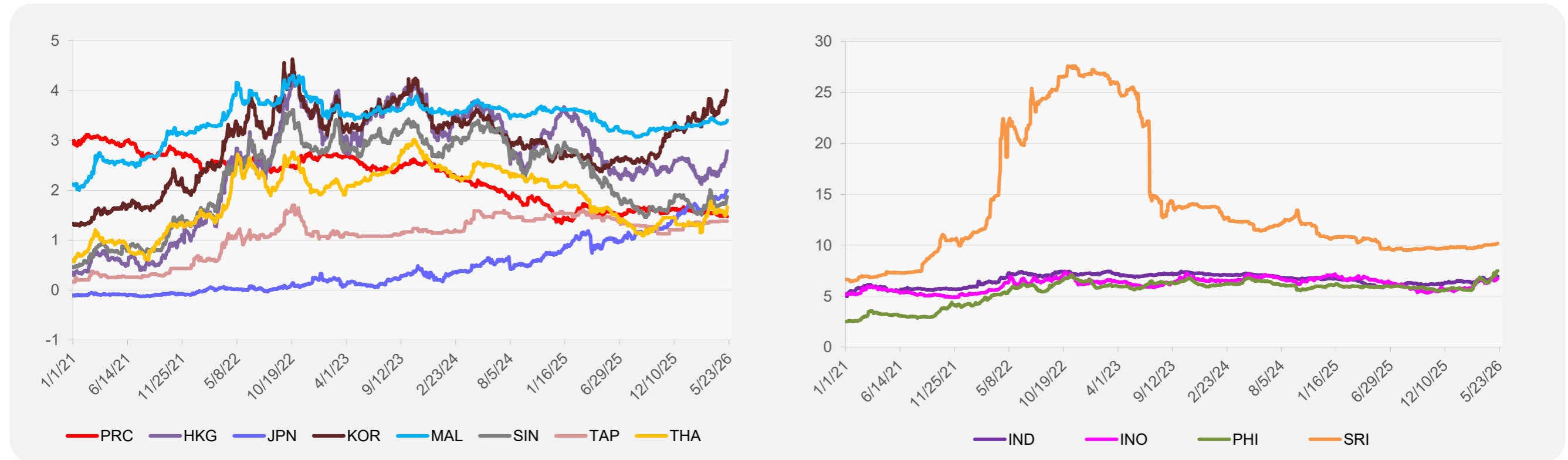
¹ Latest closing price from 13 May 2026.

² Singapore Exchange, Ribbed Smoked Sheet Rubber.

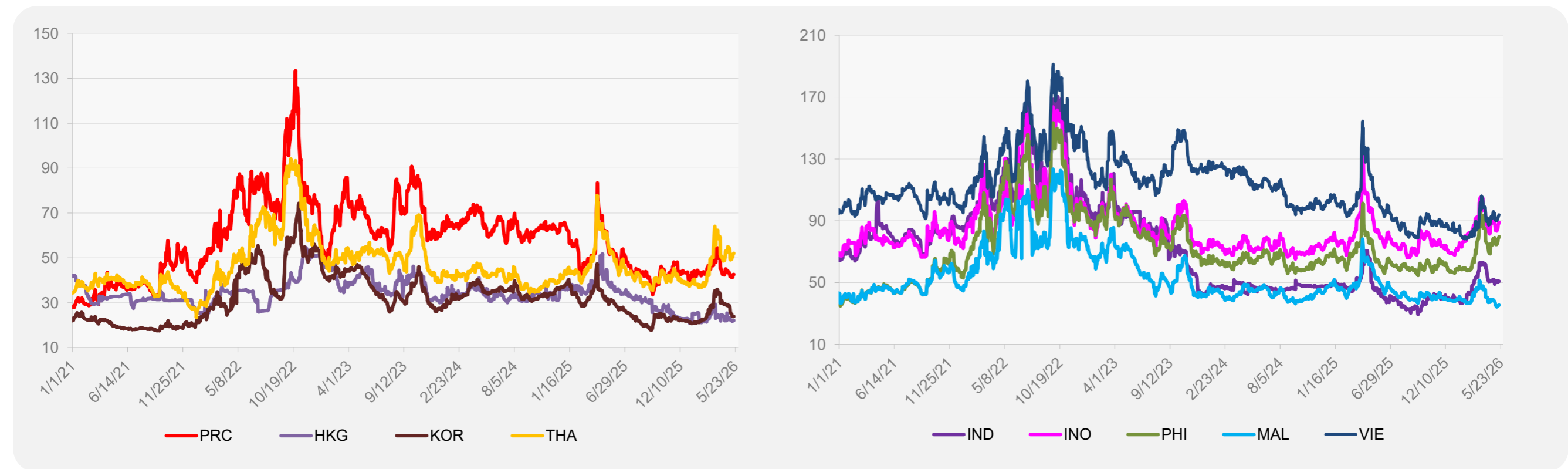


Source: ADB calculations using data from Bloomberg.

5-YEAR LOCAL CURRENCY GOVERNMENT BOND YIELDS (%)



5-YEAR CREDIT DEFAULT SWAP¹



¹ In USD and based on sovereign bonds.
Source: ADB calculations using data from Bloomberg.